



## Mayco Mid-Range Clear Glazes

## Fired Products



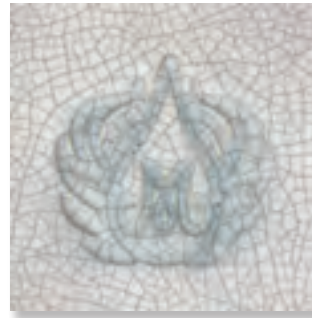
SW-001  
Stoneware Clear

**SW-001 Stoneware Clear** adds a brilliant clear, smooth gloss finish to your work. Apply to soft-fired bisque (cone 04-06) and fire to cone 5/6 or up to cone 10. Can also be applied to dry greenware for single firing.



SW-002  
Matte Clear

**SW-002 Matte Clear** fires to a satin matte finish at cone 5/6 and will perform up to cone 10 with a more satin, less matte finish. Perfect for layering techniques and slip or when Underglazes are used.



SW-003  
Crackle Matte Clear

**SW-003 Crackle Matte Clear** is developed for mid-range firing temperatures where a fine crackle pattern will develop with 3 coats. Fire to cone 5/6. Crackle pattern may not develop at higher cone 9/10 temperatures.



SW-004  
Zinc-Free Clear

**SW-004 Zinc-Free Clear** is a specialty clear glaze designed for use on glazes containing chrome-based pigments. It ensures that you will get a brilliant, smooth and crystal clear surface over these colors. Fire to cone 5/6. Carbon trapping and a milky haze may develop at cone 9/10.

## Fired Accessories

» **AC-230 Clay Carbon Paper**

Specially designed paper for transferring designs onto ware and glaze. Carbon will fire out in the kiln.

» **AC-302 Wax Resist**

Wax coating that repels glaze. Protect previous design work or use to enhance organic design. Burns off during firing. Available in 2 oz, wide-mouth pint jar and gallon sizes.



BEFORE



AFTER