

Fired Products

Stoneware Glazes



SW-100
Blue Surf



SW-101
Stoned Denim



SW-102
Silver Sage



SW-103
Sisal



SW-104
Black Walnut



SW-105
Frost Blue



SW-106
Alabaster



SW-107
Dunes



SW-108
Green Tea



SW-109
Capri Blue



SW-110
Oyster



SW-111
Wrought Iron



SW-112
Tiger's Eye



SW-113
Speckled Plum



SW-115
Midnight Rain



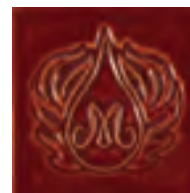
SW-116
Robin's Egg



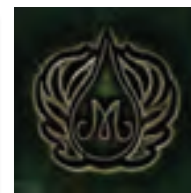
SW-117
Honeycomb



SW-118
Sea Salt



SW-119
Cinnabar



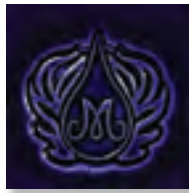
SW-120
Northern Woods



SW-121
Smoke



SW-122
Maycoshino



SW-123
Sapphire



SW-124
Matte Maycoshino



SW-125
Purple Mint



SW-126
Polished Pebbles



SW-127
Olivine



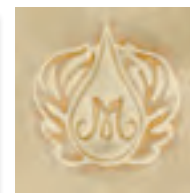
SW-128
Cordovan



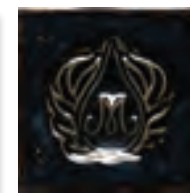
SW-129
Copper Float



SW-130
Copper Jade



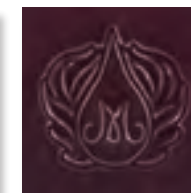
SW-131
Birch



SW-132
Mirror Black



SW-133
Copper Ore



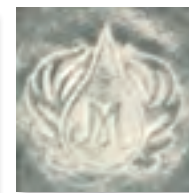
SW-134
Eggplant



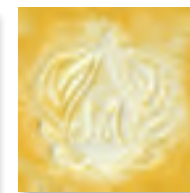
SW-135
Wintergreen



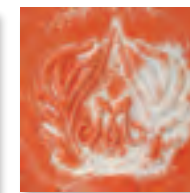
SW-136
Weathered Blue



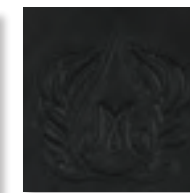
SW-137
Storm Gray



SW-138
Lemon Meringue



SW-139
Creamsicle



SW-140
Black Matte



SW-141
White Matte



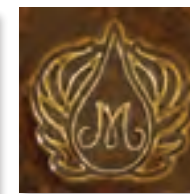
SW-142
Gray Matte



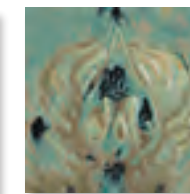
SW-143
Abalone



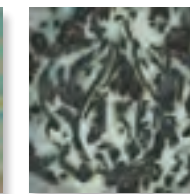
SW-144
Lava Rock



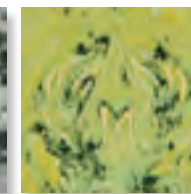
SW-145
Tea Dust



SW-146
Aurora Green



SW-147
Moonscape



SW-148
Lime Shower

Fired Products

Stoneware Glazes



Our Stoneware Glaze assortment kits offer a variety of colors, finishes and endless possibilities for glaze combinations. Mayco Stoneware Collections are **value priced** in sets of 6, wide mouth pint jar sizes. Perfect for the studio or classroom.

Stoneware Stars

This collection of Stoneware glazes offers Mayco's top-selling colors for a broad spectrum of color shades and numerous glaze combination possibilities.

SWKIT3 Contains 6 – pints of the following colors.



SW-119 Cinnabar, SW-100 Blue Surf, SW-108 Green Tea, SW-131 Birch, SW-101 Stoned Denim, SW-106 Alabaster

Stoneware Crystal

The Stoneware Crystal collection provides an assortment of Mayco's unique crystal glazes, designed to expand upon the surface with bursts of color where crystals lay. Use alone or in combination with other Stoneware glazes.

SWKIT4 Contains 6 – pints of the following colors.



SW-115 Midnight Rain, SW-116 Robin's Egg, SW-118 Sea Salt, SW-146 Aurora Green, SW-147 Moonscape, SW-148 Lime Shower.

Stoneware Ice

Mayco's Ice glazes are translucent in design, based on the Celadon aesthetic in pottery. Use these elegant glazes on heavily textured surfaces, over Mayco Designer Liner, over slips, with Underglazes or in Stoneware glaze combinations.





SW-401
Mayco Flux

Mayco Flux

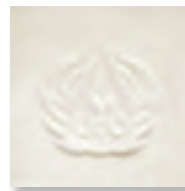
Mayco Flux is a flowing glaze intended for use with other Stoneware glazes to enhance movement and promote reactions for interesting effects. Apply over or under other glazes, uniformly brushed or randomly dabbed on with a sponge. Designed to fire to cone 5/6; can be fired to cone 9/10 in oxidation or reduction firings.

Stoneware Clear

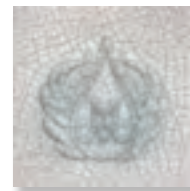
Mayco Stoneware Clear, Matte Clear and Crackle Matte Clear will preserve and enhance the surface of your work. SW-001 Stoneware Clear is formulated to reach high fire temperatures up to cone 10, where SW-002 Matte Clear may turn to a satin finish in higher temperatures. The crackle pattern in SW-003 Crackle Matte Clear may not develop at cone 10 temperatures. SW-004 Zinc-Free Clear is a specialty clear glaze designed for use on glazes containing chrome-based pigments.



SW-001
Stoneware Clear



SW-002
Matte Clear



SW-003
Crackle Matte Clear



SW-004
Zinc-Free Clear

Stoneware Opals

Mayco Stoneware Opals will delight clay artists with diversity of color and unique finishes. Opals offer bright, pastel shades that will change in opacity and depth of color with each layer applied.



SW-250
White Opal



SW-251
Pink Opal



SW-252
Blue Opal



SW-253
Green Opal



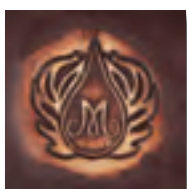
SW-254
Yellow Opal



SW-255
Gray Opal

Stoneware Wash

Mayco's Stoneware Washes are a multi-purpose product with limitless possibilities. These washes can be used alone for staining techniques or with any glaze from low-fire (cone 05/06) up to cone 10. They are beautiful in oxidation or reduction and can expand the glaze palette for an artist or teacher. Our washes are metallic glaze colorants formulated for ease of use and versatility. Washes are highly concentrated and available only in 4oz jars.



SW-301
Iron Wash



SW-302
Rutile Wash



SW-303
Manganese Wash



SW-304
Copper Wash



SW-305
Cobalt Wash



Fired Products

Stoneware Glazes

Mayco Stoneware glazes are formulated to be friendly to the user in application, layering and firing. In line with our commitment to quality, we strive for consistency and dependability in performance and firing.

General Use

Use Mayco Stoneware Glazes on any midrange clay body. These glazes are intended for use at cone range 5/6 but are also stable and pleasing at cone 10. Can be used in oxidation, reduction or other alternative atmospheric firing conditions. Due to variability in clay bodies and kiln personalities, we recommend testing prior to application to artwork.



Dipping with dry glazes

Use Mayco Stoneware Dry glazes (SDs) for fast dipping and layering, creating natural flowing effects. Fine and uniform particle size and a thorough dry mixing process make our Stoneware Dry glaze consistency so perfect that sieving is optional.

Available Sizes

- » Wide mouth Pints
- » 5 lbs & 25 lbs Dry (most glazes)
- » Washes available in 4 oz only



Ice Glazes

Used alone, Stoneware Ice glazes produce beautiful color variations, deepening with additional coats. In combination, as shown here with SW-118 Sea Salt, the same color qualities are enhanced by the blend of crystals from Sea Salt.



Opals Glazes

Formulated to produce bold colors with unique finishes, combining Opals with Mayco's Stoneware palette can bring amazing professional results to any artist. Glazes shown here: SW-253 Green Opal, SW-135 Wintergreen, SW-255 Gray Opal, and SW-254 Yellow Opal.



Variegating Mattes

Mayco's variegating matte glazes- SW-136 Weathered Blue, SW-137 Storm Gray, SW-138 Lemon Meringue, SW-139 Creamsicle- are unique glazes that change in appearance with number of glaze coats. One coat will display more color with additional coats will increase mottling and white variegation. These glazes also allow surface decoration to display through the glaze and fire to a matte finish. Non-Toxic and food safe. Glazes shown here: SW-139 Creamsicle, SW-138 Lemon Meringue, and SW-137 Storm Gray.



Stoneware with Stroke & Coat®

Artists can incorporate and combine other Mayco products with our Stoneware glazes. Use Stroke and Coat® with Stoneware glazes for an intense splash of color or add designs for unique results. Glazes shown here: SC-78 Lime Light, SW-110 Oyster, and SW-134 Eggplant.

Stoneware with Designer Liner

The most intricate details can be created with Mayco's amazing Designer Liner under any of our Ice or Stoneware Clear glazes.